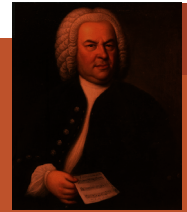




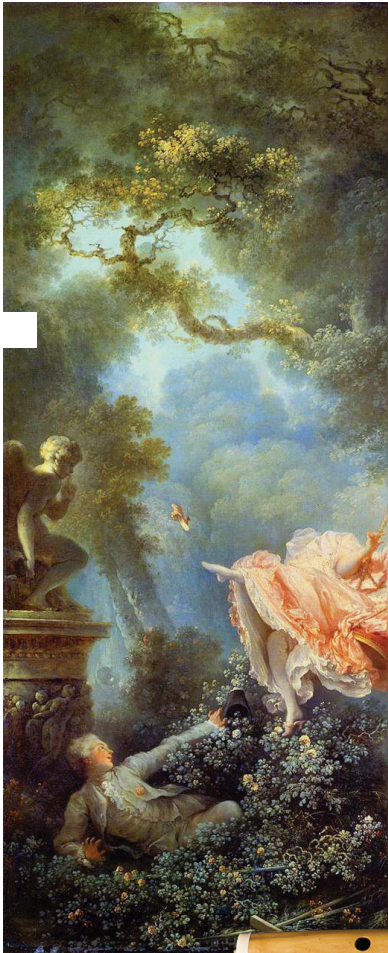
ENSEMBLE
Musical
OFFERING



BACH'S BUILDING BLOCKS[®]

A High-Impact Educational Program
for Young Children

Presented by
Ensemble Musical Offering
Milwaukee's Midwest Bande for Early Music



Your students will have a new appreciation for music of the past - the basis for our Western musical culture. Bach's Building Blocks[®] teaches young students to become architects of music by exploring how buildings are designed and music is made. Professional musicians from Ensemble Musical Offering examine the 1725 Anna Magdalena Notebook, written by Bach for his children. This cornerstone of music becomes the "blueprint" by which the vocabulary of music and architecture come together.

What to expect:

- 17th and 18th Century instruments are utilized in performance and demonstration
- Hands-on materials, such as real blueprints, gut strings, harpsichord jacks, and Baroque horse-hair bows provide points of discussion
- Question and Answer period inspires students to learn more

Musical Offering provides:

- Nationally-recognized early music artists who specialize in the music of JS Bach (ca. 1685-1750)
- Instruments from the composer's time such as violin, flute, harpsichord, cello
- Blueprint handouts
- A copy of Bach's 1725 Anna Magdalena Notebook in manuscript format for viewing
- Display of JS Bach memorabilia
- CD player and appropriate recordings

Schools provide a simple set up:

- Space for three to four musicians including music stands; armless, straightback chairs; and piano bench if possible
- Audio visual equipment, i.e. overhead projector, computer for PowerPoint use, screen
- Conference-size table for display
- Bottled water for musicians
- Storage space for instrument cases, coats
- Two custodians to assist in moving harpsichord, approximately 70 pounds.

Project time:

45 minutes to one hour plus set up time.
Residency activities are also available.

Contact:

Joan Parsley, Artistic Director, Musical Offering Ltd.
musical.offering@yahoo.com
Phone: 414-258-6133